



PANACHE
CRUISES

Expedition Cruise Guide

PanacheCruises.com



Elite Ocean, River, Expedition, and Yacht-Style Cruising

Dear Friend

Expedition cruising is the fastest growing sector of the cruise industry, with new ships being introduced each year for the foreseeable future.

Gone are the days when your options were limited; today expedition cruises are so different than they were just a few years ago.

Seabourn, Silversea, Scenic, Celebrity and other cruise lines have joined the expedition specialists to bring more luxurious cruising experiences to the far flung destinations on offer.

It's also no longer just about exploring the polar regions - there are many different expedition destinations on offer. So whether its volcanoes, icebergs, glaciers, fjords, waterfalls, rainforests, deserts or wildlife, an expedition cruise could be your perfect choice.

At Panache Cruises our helpful and experienced Cruise Connoisseurs have extensive knowledge of all aspects of expedition cruising. We are always happy to chat through ideas and discuss your next adventure.

Please do give us a call on 0161 516 8531 to open up the world of expedition cruising.

If you have any immediate questions feel free to send me an email at James.Cole@PanacheCruises.com

Best regards

James Cole

Founder - Panache Cruises



What's inside ?



Contents

- 3** Why Panache Cruises ?
- 7** Expedition Cruises
- 8** Expedition Cruising FAQs
- 12** Expedition Cruise Lines
- 21** Expedition Cruise Destinations
- 30** Join Our Chairman's Club
- 32** Meet Our Cruise Connoisseurs



Why Panache Cruises?

Every industry has a game changer, someone who does things differently, and the cruise industry is no exception.

Founded by James Cole, one of the most recognised names in the cruise industry, Panache Cruises prides itself on its team. We don't just 'book cruises', we craft each cruise holiday as if it were our own trip and we intend to leave no stone unturned in creating the ultimate cruise experience.



Our team have unparalleled experience and knowledge, but that doesn't mean we do everything the way it's always been done – quite the opposite, if we can see a better way of doing something then we embrace it.

We know you want a completely personal service, so we deliver that. Our Cruise Connoisseurs provide a single point of contact throughout your experience with us.

We know you want bespoke holidays that are carefully crafted to suit you, so that's how we do it.

We know you want a truly unique experience, not an 'off the peg' holiday, and we excel in making that happen.

We know you want unrivalled financial security, so with our ATOL approved Trust Account, we give you just that. Your money is 100% safe with us.

Our team is our business. Our people have flair, spirit, confidence, enthusiasm and energy but most of all, we are creative perfectionists.

We simplify the process. Our totally personal service removes the need to negotiate those annoying automated call centres.



Why Panache Cruises?



Your Personal Cruise Connoisseur

However you first contact us, whether it's a scheduled appointment, an email enquiry or you just pick up the phone and call us, you'll be introduced to one of our 'Cruise Connoisseurs' - your personal concierge. They will be your single point of contact.

Our Cruise Connoisseurs are seasoned travellers and between them they've covered the world. On average they have over 10 years of experience in the cruise industry so wherever you're heading, we have someone on the team with invaluable experience. They're experts in researching, planning and creating the perfect cruise holidays.

They'll get to know you, understand exactly what you're looking for, and make personal recommendations that you'll love.

Nothing is too much trouble for your Cruise Connoisseur, they take all the hassle and hold music out of booking your cruise and make it easy and exciting. They operate on the premise that the devil is in the detail, ensuring all the finer elements of your cruise are taken care of, including:

- Airport Transfers
- Car Parking
- Security fast passes and lounge access
- In-resort transfers
- Pre-cruise hotels
- Tours and excursions
- Onboard dining

Meet our Cruise Connoisseurs at the end of this guide.



Why Panache Cruises?



We are the envy of the industry

When you call, we answer. No 'press one for this, two for that' automation. Just real people, answering the phone.

You can expect the highest standards of customer service. Experience and knowledge combined with politeness, courtesy and a common-sense attitude make our team the envy of the industry. Our team has sailed on every cruise line we work with, so they can answer any question. With the most experienced professionals in the cruise industry on board, you couldn't be in safer hands.

Our high standards naturally extend to the cruise lines we choose to partner with. We only work with selected, handpicked Premium and Ultra-Luxury cruise lines across which fits with us being specialist in Elite Ocean, River, Expedition and YachtStyle cruising.

Finally, our word is our bond, if we say we're going to do something, we do it.



Our industry leading founder

James Cole is an industry veteran with over 20 years' experience in cruising. The creative brains behind some of the UK's largest cruise brands, including The Cruise Store, Cruise118, Six Star Cruises and River Voyages, James is devoted to cruising and has been responsible for selling over £1bn of cruise holidays.

James is always happy to hear from you, have a chat or help in any way he can. You can reach him by email or on his personal mobile

Why Panache Cruises?



Our Wider Family

Our team has proudly worked with our cruise line partners for over 15 years. We understand their products as well as they do, and our close relationship ensures we receive access to the very best offers and products available.

Panache Cruises is a member of The Travel Network Group. TTNG is one of the largest independent travel companies in Europe and provides Panache Cruises with unmatched purchasing power as well as the most competitive rates for airlines, hotels and land-based tours.

Unrivalled financial security

For complete peace of mind, we are members of the Travel Trust Association (TTA) and fully comply with their code of conduct. Established in 1993, the TTA has over 600 travel agents and tour operator members. The TTA provides us with a trust account where all customer monies are paid into until they are required to pay for your cruise holiday. In the unlikely event of our insolvency any monies paid will be refunded in full

Panache is an ATOL bonded travel company, which means that in the unlikely event of our insolvency you can continue to enjoy your cruise holiday if you have already departed, or you have the option to be fully refunded if you have yet to travel. ATOL protection also extends to the collapse of an airline.

Finally, we only partner with cruise lines that are ABTA and ATOL protected which means that when you book with Panache Cruises your money could not be in safer hands.



Expedition Cruises

A trip on the Orient Express. A world cruise. Driving Route 66. A safari on the plains of Africa.

Travel experiences which ignite the soul and end up on so many bucket lists. Some are grand affairs that will take you away for months. Others might be ticked off in just a few weeks. But the impact this type of experience will have on you is one that will last a lifetime.

In recent years, a whole new type of adventure has gained both prestige and popularity, and that is expedition cruising. Whilst some cruise lines have been offering this sort of voyage for years, it is only more recently that the luxury cruise lines have taken the opportunity to get involved by launching their own incredible expedition programmes.

You might be wondering exactly what we mean by 'expedition cruising', whether it's something you might want to do or whether you are physically able to take an expedition cruise. So Panache Cruises offer this guide with everything you need to know. With so many options available from a range of ships, destinations, and experiences, Panache Cruises can curate your perfect ocean adventure. So read on, be inspired by the incredible opportunities at your fingertips, and when you're ready to start planning your expedition cruise, give one of our Connoisseurs a call. With first-hand experience of expedition cruising, we will be able to provide expert advice and guide you towards the best expedition for you.

What is Expedition Cruising?

An expedition cruise is one which will take you closer to the heart of the most remote parts of the world, such as the far-flung reaches of Antarctica – the cruise world's final frontier. An expedition is a path of enlightenment, taking each guest from tourist to intrepid adventurer, offering a wide range of immersive experiences.

An expedition cruise will take you to places which are not easily accessible by more traditional land-based trips; expeditions show you parts of the world you would not ordinarily visit. To say these itineraries are off the beaten track would be a gross understatement, for these are not holiday destinations at all. See the natural world in all its glory, walking paths as yet untrodden. Witness elements of the environment normally seen through a television screen or in the pages of books.

Moreover, an expedition cruise is an all-encompassing, enriching experience. Truly see and learn about destinations overflowing with beauty, culture, and history.



Expedition Cruising



What experiences are on offer?

To ensure their guests experience the most enriching opportunities available, the cruise lines offering expedition cruises have expertly curated programmes of events scheduled to get the most out of all the places you visit.

From guided hikes to trips out on the Zodiac inflatable boats, there are plenty of opportunities to get up close and personal to the wildlife near you, as well as the opportunity to engage with local and indigenous people. All of this will be guided by naturalists and location experts.

A team of historians, naturalists, biologists, environmentalists, and scientists will also be on board your cruise for the duration if you have any queries or wish to learn more. Additionally, they will deliver lectures and tutorials to help you make the most of your expedition experience.

An expedition cruise is unlike any other holiday. It is a chance to see the world in a different way and learn from first-hand adventures and experiences. It is a way to see wildlife in its natural habitat, and a way to learn about the natural wonders of the world. You will leave an expedition cruise with your experiences imprinted on your soul - an expedition cruise is undoubtedly the adventure of a lifetime.



Why is Expedition Cruising so popular?

Global travel is now easier than ever before. Flights are accessible thanks to increased demand and availability, as well as competitive prices. Remote destinations are easier to get to. The advent of social media has shown us the most wonderful destinations, igniting our wanderlust. There is no better way to reach the furthest corners of the planet than on an expedition cruise.

It offers a carefully planned way for tourists to become travellers, in a safe way and so that they can rest assured they will get to see the parts of the destinations visited that are worth seeing. Travelling to less well-known destinations can be a risk if you don't know where to go, how to travel, what is there before you go so taking an organised tour removes the hassle and worry and allows you to voyage unimpeded.

An expedition cruise will offer you the ultimate travel bragging rights that few others will be able to match, and for good reason.

An expedition is a way of meeting indigenous people, seeing the most beautiful wildlife in their natural habitat, learning about the threats to the environment posed by humankind, and so much more.

An expedition cruise really is a way of seeing a different side to the world and enjoying enriching experiences that will create lasting memories for all guests on board. Plus, expedition ships are almost always small and intimate affairs, so you are likely to share experiences with likeminded individuals and gain friends for life. It will change your perspective, educate, excite, and delight you and it is for these reasons that we at Panache Cruises believe they have become so popular in recent years - and are now on the rise.

If you are considering an expedition cruise, give our Connoisseurs a call and we will be happy to discuss the myriad options available to you.

What can I see on an Expedition Cruise?

An expedition cruise is destined to take you to remote lands, to explore the natural wonders of the world. Expect to see a wealth of wildlife, natural landscapes, and even engage with and support the local communities you meet along the way.

Wonders such as volcanoes, icebergs, glaciers, fjords, waterfalls, rainforests, deserts and so much more can form the basis of your expedition cruise. Island paradises and the tropical life which exist both on land and in the surrounding waters will almost certainly be on the agenda. Species which are only found in specific parts of the world will be a treasure to see with your own eyes, from the Giant tortoise in the Galapagos to the Andean Condor. You'll see polar bears roaming the tundra, humpback whales breaching the icy waters, see seals darting around, and dolphins playing right next to your ship.



Take to land or explore beneath the waves to observe some of the most complex and magnificent ecosystems the earth has to offer. Revel in the majesty of whales and orcas, witness the rare sight of narwhals cresting the waves, and iguanas basking in the sun on craggy coastlines.

An expedition cruise is a wonderful journey of exploration and intrigue. Variety and diversity is paramount. Marvel at huge manmade feats such as the Panama Canal and the Golden Gate Bridge, or behold natural phenomena such as the Northern Lights - whatever you desire to tick off your bucket list, there is an expedition for it.

Will I need specialist equipment for my Expedition Cruise?

There are many different types of expedition cruise available, from the Caribbean to Australia, Greenland to the Galapagos, and pole to pole, so specialist equipment requirements will depend on your cruise itinerary.

If you're heading to the West Coast of the USA, it is unlikely you will require anything out of the ordinary unless you are planning extreme activities. But if you are heading on an adventure to Antarctica, you will absolutely need specialist clothing.

Fortunately, the cruise lines are incredibly helpful when it comes to providing guests with packing lists and expert recommendations. With regards to specific items, many cruise lines will provide these for you on the ship - just make sure to check with your Cruise Connoisseur beforehand.



How fit do I need to be for my Expedition Cruise?

This will depend on the type of expedition cruise you have chosen. If the itinerary includes intrepid adventures or long, arduous days out, then a base level of fitness would probably be recommended.

In terms of health, some cruise lines may require a doctor's certificate of approval before the departure date. This is to ensure that no unnecessary risks are taken and that your health and fitness is put first.

Your Cruise Connoisseur is on hand to advise you about the best itinerary. There are a multitude of options available, and all excursions are completely optional, so you will never be pressured into taking part in something you are uncomfortable with.

Is an Expedition Cruise for me?

Given the broad range of itineraries available across a number of cruise lines, it is safe to say that there will be an expedition cruise suitable for most people! In today's advanced cruise world, we know that there is no 'one size fits all' cruise itinerary; different options appeal to a wider audience.

With all the continents of the world available, and so many different variations of what countries and ports are on offer, not to mention the different types of excursions included, you will most likely find something to suit your taste. At Panache Cruises, we are experts in all things expedition cruise so we are well-placed to get to know you on a personal level, find out your likes, dislikes and travel aspirations, and from this we can recommend the right itinerary and put together the perfect cruise experience for you. So whether you are an intrepid adventurer in the making, a lover of wildlife and exotic species, or an island enthusiast, there really should be an expedition to suit you.

What does an Expedition Cruise cost?

How long is a piece of string?! In short, you can spend as much as you wish, as there are so many different types of cruise available. Expedition cruises may be elevated in price when compared to a standard cruise, but this is largely due to the extra cost of a specialist ship and the depth of destination remoteness and immersion.

The carefully curated itineraries, with mostly-included shore excursions, travelling to remote destinations, and the fact that there will be a whole host of experts on board to educate and guide you every step of the way are all worth every penny. At Panache Cruises, we aim to cater towards all destination, duration, and cost preferences, so the choice is yours.



What can I expect on board an Expedition Ship?

The focus on expedition cruises is the unique nature of each destination, rather than black-tie events and formal dining. While expedition ships are, on the whole, considerably smaller than even the smallest of ocean vessels, most expedition cruise lines certainly do not lack any of the luxury facilities and amenities on board. The staff to guest ratio is usually much higher than standard voyages, so attention to detail and familiarity among the staff will make you feel right at home.

Fine dining will be offered by fantastic chefs across multiple dining venues and in some cases, you can expect a local influence too. The service will not be compromised as your crew will be as attentive as ever. What you will find on board are several of the same types of activities that might be on a standard ocean cruise, but the key difference is the expedition team and the educational opportunities they provide, as well as the much smaller group size. From on-board discovery centres to lectures about the species, environment and habitats you'll be visiting, the expedition team will guide you on your trips to ensure you get the most out of your experience.

On board you'll be mingling with like-minded travellers; it is this fabulous sense of community and camaraderie which sets expedition cruises apart from others.

Expedition Cruise Lines



Which cruise lines offer Expedition Cruises?

There are several cruise lines which offer in-depth expedition cruises and some which offer passing sail experiences. At Panache Cruises, we take extra care to only work with partners who we can trust to deliver a truly immersive experience. Some of the best cruise lines in the world offer expedition cruises and have commissioned specially-designed ships to suit various regions.

When it comes to expedition cruising, there can be little difference in the service some cruise lines offer but as the whole point of an expedition cruise is to really see the destinations to their fullest, we find some guests prefer a more authentic expedition, while others might enjoy a taste of adventure but prefer the more luxurious elements of their cruise. There are plenty of opportunities for either of these options, or we can find you an expedition with elements of both adventure AND relaxation.



Aurora Expeditions



Aurora Expeditions were one of the pioneers of expedition cruises three decades ago when they launched ship-based adventures to Antarctica. Today, they offer global, Arctic, and Antarctic cruises, but remain committed to the ethos of small-ship cruising to take groups of people eager to see remote parts of the world.

The founders of the company, Greg and Margaret Mortimer, wanted to share their passion for adventure but also create ambassadors for the preservation and protection of the places they were visiting. They have achieved this dream and Aurora Expeditions continues to focus on small-group expeditions and responsible travel. Their commitment to respectful travel is demonstrated through the use of the lowest polluting marine engines in the world, with up to an 80% reduction in emissions. Other design features allow the ships to cut through the waves more easily, thus reducing fuel consumption. Drinking water is filtered and purified from seawater and the ships do not use traditional anchors in an effort to protect the sea floor. Reduced plastic consumption, non-polluting cleaning products, recycling and responsible dining are also in place on board Aurora's two ships.

Your cruise will include activities to ensure you get the most out of your expedition, including guided walks and Zodiac trips. There will also be an expert team on board including destination specialists, local guides, and activity leaders. All meals and selected alcoholic drinks are included. On polar voyages jackets and snow boots are provided to keep out the elements. If you book a suite there will be additional benefits, such as a pair of binoculars, a spa treatment, and a fully-stocked mini bar including a bottle of Champagne. Aurora also includes all gratuities for suite guests in the total cost of their cruise.



There are many activities to be enjoyed on an Aurora expedition, including kayaking, snowshoeing, snorkelling, scuba diving, rock climbing, paddle boarding, trekking, climbing, camping, and photography. You can even walk in the steps of famous explorer Shackleton on either a trekking or skiing excursion. On board, educational lectures are led by the expert team, and you can relax after an adventurous day of exploration in the ship's spa and sauna.

Celebrity Cruises are already very well-known in the cruise world, for good reason. However, they have recently branched out into expedition cruising with two impressive state-of-the-art ships, Celebrity Xpedition and Celebrity Flora. These two ships are smaller and more intimate than Celebrity's other vessels, making them the perfect size for sailing around the natural wonder that is the Galapagos Islands. In fact, Celebrity Xpedition is the most awarded ship to sail the Galapagos Islands and its recent refurbishment has meant a new level of luxury has been added for your benefit. Celebrity Flora is chasing its heels and is the first ship to have been specially designed to suit the destination it sails to.

All-suite accommodations feature sustainable and natural materials, and a Dynamic Positioning System means the ship doesn't need a traditional anchor. Celebrity have gone the extra mile to ensure that their ships leave minimal impact on the environment.

Celebrity Xpedition is the most awarded ship to sail to the Galapagos Islands



Your Galapagos Islands cruise with Celebrity will not only show you the wonders of this unspoilt region, such as Tortuga Bay, where sea turtles and iguanas cluster, it also includes everything you need for a perfect voyage. All your meals and drinks will be included, as will your shore excursions, on board lectures, and specialist equipment such as snorkels, wetsuits, and binoculars. WiFi, gratuities, and national park entry fees will be included too so that all you need to do on your cruise is enjoy yourself.

Celebrity includes over 30 ports of call across six different Galapagos itineraries. With every island having its own distinct character, you will be able to explore volcanic Isla Fernandina and spot the Galapagos Penguin which lives there. On Bird Island, see if you can spot rare sea birds and, if you want a little history, explore how Baltra was used in World War II. Sea lions and whales can be spotted from the comfort of your luxury ship, making your expedition cruise truly memorable.



Crystal Cruises



For almost 30 years, Crystal Cruises has been recognised as the most-awarded luxury cruise line in the world. The innovation of its first expedition ship, the Crystal Endeavour, takes cruising to a whole new realm of exploration and discovery. Offering intrepid adventure and fascinating insight into far-flung destinations and cultures, the Endeavour is able to reach some of the world's most remote and untouched locations. From distant islands to world-class cities to unexplored polar regions, the Crystal Endeavour explores some of Earth's most beautiful coastal landscapes, home to exceptional biodiversity and rich cultural heritage.

With a stunning range of intrepid, all-inclusive journeys on offer, this purpose-built, sophisticated expedition yacht features 100 balcony suites, six outstanding fine dining venues, and a vast luxury spa, just to name a few of its assets. One thing is for sure – you won't need to skimp on luxury aboard the Endeavour. Feel at home in your relaxing and comfortable suite, where attention has been paid to every fine detail; your professional 24-hour butler is focused on providing any additional luxuries and comforts you may require.

Enjoy unrivalled cuisine at the selection of Michelin-inspired dining venues, such as the Japanese-Peruvian dishes served by critically acclaimed Chef Nobu Matsuhisa, and the elegant and contemporary-style Italian restaurant Prego. Relish Crystal Cruises' renowned and impeccably welcoming hospitality, lavish comforts after days spent exploring, and expert-led lectures and excursions which defy imagination.

Perhaps the most thrilling additions to the Crystal Endeavour are the two excursion helicopters and a 7-person submersible; no need to stick to land excursions when you can indulge in aerial exploration and underwater discovery. Whether you wish to take to the skies, discover the depths of the ocean, or star-gaze in the on-board Solarium, let your inner explorer guide you in choosing your dream expedition with Crystal Cruises.

Rest assured that your expedition on board the Crystal Endeavour will be a stress-free, ultra-luxurious, and highly enriching experience like no other.





Hurtigruten

The two newest ships in the Hurtigruten fleet offer a new level of comfort when compared with their older ships which is why they form part of Panache Cruises' expedition portfolio. They offer authentic adventurous travel and are perfect for guests who want to feel as though they are exploring parts of the world no one has before, while travelling in an air of luxury.

These new ships boast a revolutionary battery hybrid powered propulsion system to make them more environmentally safe. With 125 years of experience behind them, Hurtigruten's technologically advanced ships use cutting edge techniques to explore the world.

The ships have been built using Scandinavian materials; granite, oak, birch and wool are used throughout living spaces and public areas and half of the staterooms have a balcony, with some including a private outdoor hot tub.

On board you will also find the Nansen Science Center which forms the very core of the on board enrichment experience. It is what is known as an 'edutainment' centre – offering education and entertainment in equal measure. The centre allows guests to gain a better understanding of each destination and is the headquarters for the expert Expedition Team.

This team is a carefully selected, hand-picked group of individuals who are both specialists and modern-day explorers. They are passionate, experienced, and knowledgeable - they will be there to guide you on every element of your cruise, including the local area, exploration, safety, and sustainability.



Three restaurants offer a variety of food and draw on traditional Norwegian and Nordic influences. To further enhance your destination experience, you will also find foods which are inspired by the regions on your itinerary.

The expedition experience has been carefully considered throughout. There will be custom-made equipment for excursions, such as kayaks, underwater drones, and expedition boats.

With Hurtigruten, witness fascinating nature from waterfalls and volcanoes to glaciers, icebergs, and immense polar landscapes. Get up close to wildlife and take the opportunity to visit Inuit communities. UNESCO World Heritage sites will be included, as will a range of landings and ice cruising.

Ponant Expeditions

Ponant Expeditions are the only cruise line in the world to sail under the French flag and offer a uniquely French ambience.

Ponant cover some of the most extreme places on earth but also some of the most exotic. From Antarctica to Papua New Guinea, Ponant have 20 years of experience in expedition cruising; they are true polar specialists. When you choose one of their voyages, you are choosing a unique blend of luxury and exploration.

With Ponant, you will have the opportunity to meet Inuits, dive beneath the crystal clear waters of the Seychelles, go jungle-trekking in Central America and conquer the final frontier – Antarctica. You'll see all of these amazing wonders accompanied by an expert Expedition Team, who are naturalist guides and enthusiastic leaders.



Zodiac trips are included, along with any specialist equipment required for a range of epic excursions. The team will introduce you to the regions you are visiting and help you to understand what you are seeing. Be prepared to immerse yourself in learning about the places and cultures you visit.

Ponant have partnered with National Geographic to provide wonderful encounters with nature which excel beyond the boundaries of normal travel. Perfect for those with a real wanderlust and a passion for exploration and adventure, Ponant Expeditions will take you on the ultimate voyage of discovery.

An expedition cruise with Ponant will be an enjoyable trip that ensures your wanderlust needs are satisfied. From fine cuisine to a sophisticated ambience, you will be welcomed by first class, intuitive service.

With a sublime combination of luxury and discovery, Scenic have developed the World's First Discovery Yachts. Boasting world-class facilities that you would expect to find on only the very best six-star cruise ships, they also have a range of extras that will blow your mind such as a helicopter and seven-seat submarine! These extras will allow guests to go further than have ever gone before.

The Scenic Eclipse fleet will take you to a range of destinations a whole world away. Why not opt for a journey deep into Antarctica? The Antarctic has long been seen as a place many cruise lines could not visit, but when you choose Scenic for your expedition, you will have a truly unrivalled experience - one you will cherish forever.



Scenic

If the awe-inspiring scenery at the bottom of the world doesn't tempt you, why not head to the top of the world instead, with a cruise to the Arctic? Visit Iceland and take a trip around the capital, Reykjavik. Your on-board submarine can brave the chilly temperatures of the water to reveal a world usually hidden from sight. There are lots of itineraries available to enjoy from the Scenic Eclipse fleet, all of which include up close and personal experiences with the world around you. You'll truly be immersed in these beautiful places, from a kayak trip past glaciers to sailing the Norwegian fjords. So if you think this is the right type of expedition cruise for you, get in touch with our Connoisseurs at Panache Cruises and we will help select the perfect itinerary for you.

All suites have their own veranda from which to enjoy the passing scenery. There are nine fantastic dining options, eight lounges, a Spa sanctuary, a gym, Pilates and yoga studio, therapeutic Jacuzzis, and a Scandinavian-inspired plunge pool.

It goes without saying that your cruise will be all-inclusive, and you will have your shore excursions included within your fare. A team of experts will be on board with you to educate, delight and inform you about the places you are visiting and natural wonders you will see. An enrichment programme will ensure that you have nothing but exceptional experiences, every nautical mile of your trip.

The Scenic Eclipse fleet will not only take you beyond borders...it will do so in a perfect blend of adventure and luxury combined



Seabourn

Well-known for their luxury offering in the traditional cruise world, Seabourn have brought their six-star proposition to the expedition world with the launch of their ship, Seabourn Venture. Purpose-built so it can smoothly cruise the most remote regions, the Venture will be an expedition cruise like no other. Sail to the most secluded parts of the world in complete elegance, with a service that would not be out of place in the finest hotels on the planet.

With a range of itineraries set to inspire you, your Seabourn Venture expedition cruise will allow you to see sights that are unprecedented. Sail jungle rivers in tiny Zodiac inflatables, uncover the secrets of the Inuits, gaze at the majesty of the birds flying overhead, kayak through freezing waters past looming glaciers and discover the ancient civilisations of the Incas and the Vikings. Spot whales from the deck of your ship and marvel at the seals jumping off the coastline. Take to the depths in the on-board submarine and hear the boom of cascading waterfalls.

On your Seabourn expedition cruise, you will find that luxury never ends and the service will make you feel like the most treasured guests who have ever sailed on the ship. With eight spectacular dining venues and a professional butler service, you will find Seabourn to be one of the most inclusive and luxurious expeditions available.

Shore excursions of all kinds, including Zodiac trips, scuba diving, snorkelling, and mountain biking are available. Swarovski crystal binoculars can be used to spot wildlife and in polar regions you will be provided appropriate clothing and snow gear.

A Discovery Center on board is the hub for all information about your intended destinations; it is even specially designed to imitate beautiful natural landscapes. Enjoy insightful lectures, briefings, and Seabourn Conversations delivered by the expert Expedition Team who will be there every step of the way to guide and advise you on the wonderful world that surrounds you.





If you want to head to the ends of the earth, then an expedition cruise with Silversea is a great way to do so. Known for their ultra-luxury ocean cruise offering, Silversea have years of experience in treating guests to an on board experience that is second to none and their expedition cruises are no different. With a choice of three ships, you will undoubtedly be treated to thrilling experiences in a uniquely different form of travel.

You can expect fine dining across several venues and drinks can be delivered to your cabin whenever you desire. Take to the waters in a kayak, head off on a Zodiac adventure, or perhaps go snorkelling in tropical waters. Accept a special invitation to meet the local people of the places you visit, allowing you to become further immersed into the history and culture of the location. A wonderful example of this is the opportunity to join a traditional Melanggan feast with the indigenous people of Melanesia - an experience truly unique and memorable.

See a variety of species from pygmy hippos to iguanas, sea lions, and penguins. Jaw-dropping gorges, ice floes, deserts, tundra, and tropical paradises await on an expedition with Silversea. After an awe-inspiring day out among nature, step back on board your ship and enjoy all the splendid luxuries of a Silversea expedition from the comfort of your elegant suite.



Since an expedition cruise is all about the destination, your time on board will not be squandered. The Expedition Team accompanying your cruise are not only passionate about where you are headed, they are also highly qualified and knowledgeable and are willing to impart all of that onto their interested guests. Relish the opportunities for on-board learning and shore immersion before a well-spent evening indulging in a relaxing spa treatment and sophisticated dining. Silversea are passionate about providing their guests with a well-balanced expedition experience, and boy do they deliver.

Expedition Destinations



Delve into the isolated sanctuary of the Galapagos, voyage to the ‘birthplace of icebergs’ in Greenland, witness the majesty of Patagonia, explore the paradise islands of the Caribbean, or marvel at the captivating wonder that is Antarctica.

What destinations are available on an Expedition Cruise?

Unlike your average holiday, an expedition cruise’s sole purpose is to show you as much of the world as possible, and often in different ways. The key focus on any expedition cruise is the destination itself, with ships specially built to respect the local environment. Excursions are carefully curated by regional experts to ensure that all guests will see, learn, and experience as much as possible.

So choosing where to go on your expedition cruise is crucial to your enjoyment. The problem is, how do you choose where to go? With so many incredible places to discover, the choice will be tough. When you are ready to start discussing your expedition cruise, our Connoisseurs will really get to know you, your likes and dislikes, and the things which set your soul on fire. And with that information, we will be able to help put together your perfect expedition cruise holiday. So read on, be inspired, and give us a call when you’re ready...



The Arctic & Greenland



Head to the very top of the world for an expedition cruise and you will be treated to freezing, rugged landscapes that appear as though they have yet to be explored. The Arctic regions and Greenland are known as the birthplace of icebergs, and it isn't hard to see why! Sail amongst these majestic structures and listen out for them calving in the distance.

The Arctic is resplendent with wildlife and a diversity of species that will never fail to amaze you. See puffins as they dive for fish into the dark waters beneath you, and see if you can spot a polar bear roaming the lands, protecting their territory. Witness a minke whale breach next to the ship, snap shots of reindeer and caribou as they wander the icy tundra, and marvel at the walruses and seals lounging on the ice. The eagle-eyed might even catch a glimpse of an arctic fox. You can spot much of this from the sanctuary of your balcony on board your luxury expedition cruise ship, but the real adventure starts when you step onto a Zodiac or terra firma to take one of your guided excursions.

Try your hand at dog sledding and visit Inuit ruins on your voyage to Greenland's capital city, Nuuk, thought to be 4,000 years old. In Iceland, immerse yourself in the rich volcanic history of the land of fire and ice.

Travel at the right time of year, and you might catch a glimpse of the impressive Northern Lights. See red sandstone mountains and search for Black-legged Kittiwakes and Ivory Gulls. Bowhead whales, Beluga whales and humpback whales are commonplace in this region so all being well, you will see some. Walk to a waterfall in Ilulissat, Greenland, and see the Icefjord, a UNESCO World Heritage site. Cruise through the most stunning fjords where dramatic natural features such as steep mountains and glaciers will continue to amaze you.

Your expert team on board will take into account the weather and other environmental conditions and will plot the course you sail. An expedition cruise in this region is one of the most exciting you could choose, as you never know what will be around the next turn.

Catch a glimpse of the impressive Northern Lights and capture the sight within your memory forever...



The Caribbean



Perhaps not the destination which springs to mind when you first start to think of an expedition cruise, but it is fair to say that an expedition can be enjoyed wherever in the world there are treasures to explore. And the Caribbean is certainly filled with those!

As the Caribbean is such a central place, within easy access of Central, South and parts of North America, many expedition cruise itineraries will take you beyond the reaches of the Caribbean and into other lands, so expect an itinerary with a difference.

You'll discover places you might never even heard of on an expedition cruise to this region. For example, start your voyage in Panama and you can start to explore the 300 islands of the San Blas archipelago and the island of Holandes Cay. Get to know the Kuna people before you head onwards to Colombia, where you will experience the aftermath of colonialism. A must-see in the Caribbean is without a doubt the striking volcanic Pitons of St Lucia.

Or perhaps you want to transit the Panama Canal after exploring the tropical islands from the Bahamas to the Cayman Islands. You'll learn about the regional flora and fauna and be encouraged to sit on deck, seeking out Hawkbill and Green sea turtles and spot flamingoes with their distinctive pink hue.

Visit Colombia's stunning Seaflower Biosphere Reserve with its full kaleidoscope of marine life. Snorkel amongst barracuda, nurse sharks, hammerheads, turtles, and spotted rays.

So if it's a sun-filled adventure you are after, a circumnavigation of the lesser-known wonders of the magical Caribbean islands makes for a wonderful and unique expedition cruise.

Tropical waters, palm-fringed beaches, colourful fish darting over coral reefs, slow reggae beats, tales of pirate ships and rich cultural heritage await in the Caribbean



So vast, the Americas covers not one but two continents, each impressive in their own way. An expedition cruise to the West Coast of the USA and Canada will offer you inspirational coastlines, icy volcanoes, and vibrant cities with iconic landmarks.

Witness the majesty of the world's tallest trees in the Redwood National Park, California. These towering trees dwarf you with their size and lifespan as you wander through ancient woodlands. Wildflower meadows, mountain summits, and rugged coastlines allow you to become fully immersed in nature. Enjoy jazz music in San Diego, go whale watching in Santa Barbara, and visit the famous island of Alcatraz. Sail under the Golden Gate Bridge at sunset as you head to your next port and explore evergreen forests in Canada.

North & Central America



From Costa Rica to Panama, you can explore the natural wonders of this area from the luxury of your cruise ship.

Nature reserves, local communities, and ancient manmade wonders such as the Mayan temples and Panama Canal combine to create an exhilarating tropical adventure. Multi-coloured birds, monkeys and iguanas all await you in the Curu Wildlife Refuge and the Manuel Antonio National Park.

Meet local communities such as the semi-Nomadic Emberas people and then discover idyllic island paradise with the coral islets and crystal-clear waters. Explore the Blue Hole off the coast of Belize and head to scuba diving paradise that is Cozumel where you can immerse yourself in underwater worlds. There are many beautiful regions in Central America to see and experience on an expedition cruise.



South America & Galapagos Islands



Filled with mystery, intrigue and some of the most wild and rugged landscapes you can imagine, South America is home to beautiful and diverse natural history. An expedition cruise here is a true adventure and can be the launch pad to heading into the Antarctic wilderness.

Excellent snow conditions allow for a whole host of sporting pursuits. Patagonia can be visited via an expedition in partnership with National Geographic; you will sail the striking Chilean fjords and channels and see unrivalled landscapes. Sea lions and porpoises are among the wildlife you might spot on your journey, and you will be given opportunities to explore quaint and remote villages.

Further north, explore the lush Amazon rainforest and the arid Atacama Desert. Walk the path of the Incas and catch sight of a rare Andean Condor soaring overhead. Enjoy a Pisco sour and dance to the rhythm of the samba in Rio. South America is a never-ending blend of contrasts, from its impressive landscapes and wildlife to vibrant cities.



The Galapagos Islands are one of the most famous expedition destinations for good reason. Stepping onto one of these islands, the beautifully rugged terrain is perfectly preserved and largely untouched by tourists. An actively volcanic region and a sanctuary of biodiversity, the Galapagos islands are well-protected and there is a limit on how many people can visit each year.

Many cruise ships have been specially modified to reduce pollution and retain the delicate balance.

Wander in Darwin's footsteps to see evolution happen before your very eyes, and be astounded at the grandeur and beauty of this special region.

The wildlife here is simply extraordinary, from iguanas that dominate the rocky coastline, to giant tortoises, Darwin's finches, Sally Lightfoot crabs, and Blue-footed boobies; every creature will enchant and amaze you.

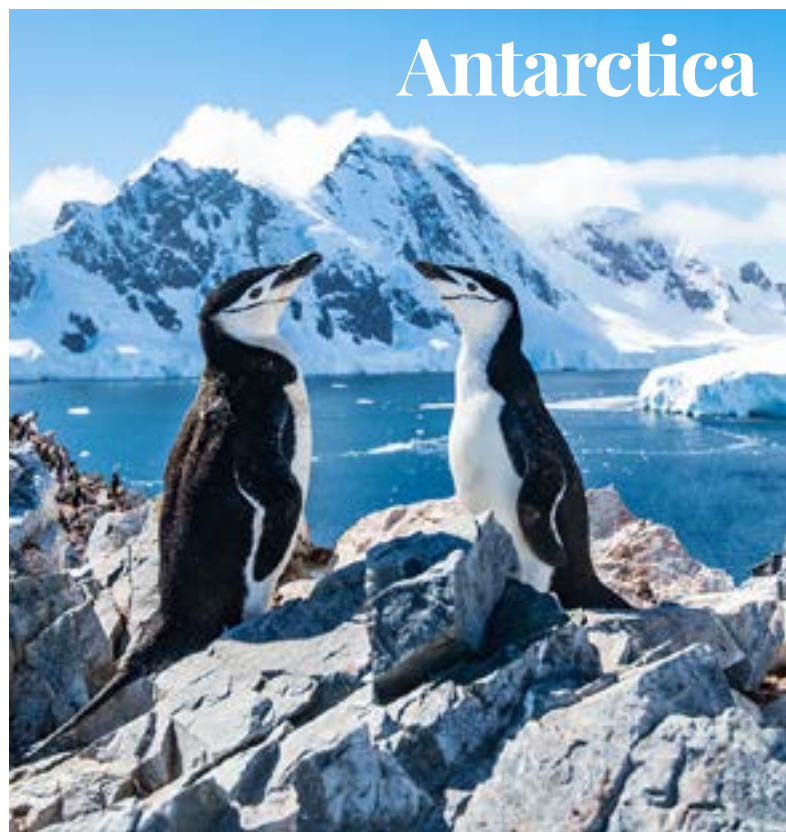
Some expedition cruise ships will have a submarine on board which will allow you to delve into the depths of the ocean and encounter spectacular underwater ecosystems.



Perhaps the most iconic and sought-after expedition cruise destination, Antarctica adorns the bucket lists of travellers the world over. With 98% of its surface covered in ice, it is home to ninety per cent of the world's ice and seventy per cent of fresh water!

Freezing and remote, there are few inhabitants. With such raw, unspoilt beauty awaiting you when you arrive, it is quite obvious why people want to travel there. It is almost untouched by the destructive hands of humankind, so take your opportunity to see it now in its purest form and you will not be disappointed.

In Antarctica, you will see the power of Mother Nature at work and admire her handiwork as you revel in the sheer beauty of the wilderness. You will see blue-tinged icebergs gracefully drifting as you sail by and perhaps spot orcas, minkes, and humpbacks in their natural environment. It is a land of pristine beauty, filled with a huge range of wildlife that makes this continent so important to naturalists and travellers alike.



Antarctica



Observe penguin colonies, seals, and whales as you cruise the Antarctic Peninsula. Explore on a Zodiac with a small number of like-minded guests, or delve into the icy depths in a submersible.

You will be dwarfed by the icebergs of the Antarctic Sound on your way to visit old whaling stations in the South Shetlands.

On the island of South Georgia, you'll be able to follow the path of famous explorer Ernest Shackleton and visit the museum which depicts his unfortunate mission in 1914. It is a UK territory and an old whaling station but is now home to over 1 million macaroni penguins.

Catch sight of more wildlife per square foot than anywhere else on earth in the final frontier, Antarctica.

After a day of admiring the jaw-dropping sights of the most remote and inhabited location on Earth, retreat to your cruise ship and warm up in the sauna before enjoying impeccable dining, motivational lectures, luxury spa treatments, and dazzling evenings on board.



Australia & New Zealand

Travelling Down Under can seem a lengthy trip so if you are headed to this part of the world, why not make it worth your while with an incredible expedition. With so much to see and do, it really is worth the trip - especially when you choose a luxury expedition cruise.

From cute koalas, to Aboriginal treasures such as Uluru and the glowing red hue it emits when bathed in sunlight, to wandering the hobbit-lands from Lord of the Rings in stunning New Zealand, you can have a truly enriching experience in the Antipodes. An expedition itinerary around this region will provide the experience of a lifetime.

Take a journey from Melbourne, half way around the coast of Australia to finish in Darwin and along the way you will snorkel with sea lions and whale sharks, sample the finest wines and seafood of the regions and visit some of the best-known cities in Australia.

Moreover, see the rich history that Australia has to offer, including Aboriginal rock art as well as the unbelievable geological features that abound. Visit one of the many islands off the coast of this vast expanse and see kangaroos sunbathing, and sample rock lobsters, a delicacy on the Abrolhos Islands.

See a coral reef classified as a UNESCO World Heritage site, home to more than 250 species of coral and 500 species of fish. Cruise by Zodiac to the impressive King George Falls and witness incredible varieties of wildlife; wallabies, crocodiles, Green sea turtles, manta rays, humpback dolphins, whale sharks, hammerhead sharks, monitor lizards, and an abundance of birds can be found on a coastal Australian expedition.

If you prefer to journey around the wonders of New Zealand, an expedition will be an excellent and immersive way to do so. Start in Scottish-influenced Dunedin and discover peninsulas covered in verdant hills, lined with rugged coast lines.

Try the wines of the famous Marlborough region, enjoy a swim in a flooded volcano crater, and sail on to uncover the secrets of the Maori people in the capital, Wellington. Explore hot springs, more volcanoes, geysers, rivers and gorges and even see a lake which changes in colour from blue to orange. Meet brave warriors, enjoy breath-taking scenery, and observe the marine life that lives beneath your ship.



Head down under for rugged mountains, golden beaches, wonderful wildlife, native culture and colourful coral reefs

South Pacific



Names like Robinson Crusoe and Paul Gauguin are synonymous with this remote and truly idyllic part of the world. If you would like to be amongst those who have explored this region, an expedition cruise is highly recommended. A vast region populated with tiny islands, the South Pacific is a stunning location for the ultimate island-hopping adventure.

Dotted about like drops of perfect heaven, these idyllic islands will welcome you with their laidback charm, lush foliage and pure white sands encircled in the clearest and most tranquil waters you could ever hope to see. Over three million square miles, you will find rich diversity, from towering mountains in Papua New Guinea, to deserted atolls and tribal cultural diversity that will amaze you. Explore the islands' unparalleled beauty from the comfort of your luxury expedition ship.



Uncover the real story behind the myth of the demi-God Maui, and explore miles of pristine coral reef. Take in Fiji, Tonga and the Cook Islands, with UNESCO World Heritage sites such as Levuka, Fiji's first capital, and take a Zodiac safari in a picture-perfect lagoon. Relax on soft white sand beaches and take photos of the perfect harbours you come across such as the Port of Refuge.

Learn about the homeopathic natural remedies favoured by the locals in the Cook Islands and be challenged by a traditional warrior when passing through the narrow channel to reach the main village of Aitutaki. Head over to Bora Bora for possibly the most iconic vision of Polynesian island paradise; see for yourself the emerald-green hills, sapphire lagoons, and dazzling golden beaches. Your journey will be populated by stunning wildlife, from the fish darting about in exquisite colour on the reefs, to dolphins, rays and sharks to the red-footed booby, bridled tern and sea kraits that flit about the skies.

Asia



With a continent as vast as Asia, it is very difficult to know where to start. Nowhere on earth has such a broad range of sights to behold and cultural experiences on offer. As such, an expedition cruise here can be one of the most enlightening and rewarding places to travel.

Immersive itineraries including Myanmar, India, and Sri Lanka, offer a spiritual voyage. In India, discover Chennai, formerly known as Madras, and the ancient temple of Kapaleshwara which was dedicated to Shiva. Head to Sri Lanka and visit UNESCO World Heritage sites such as the vibrant cultural city of Kandy and the magnificent Lion's Rock in Sigiriya.

Or perhaps you wish to visit Singapore to explore the botanical gardens, the Island of Sentosa, and the buzzing Chinese Quarter. Cruise the Sunda Strait of Indonesia to see Krakatoa, the most devastating volcano in history. Visit port towns, quaint local villages, and observe the lifestyle of the local people in this stunning part of Asia.



If the Far East takes your fancy, the sights of Japan and South Korea have an abundance of natural and man-made beauty to experience. Choose from a subtropical island adventure, or the cities of Nagasaki, Hiroshima, Osaka and more.

In Japan, learn about some of the most important events in recent history and wonder at some of the most technologically advanced cities in the world. Magnificent national parks and traditional villages combine with stunning beaches, tropical forests and unique biodiversity to create the perfect itinerary for you. In South Korea, visit the beautiful and colourful cultural port city of Busan and treat yourself to a deliciously authentic Korean BBQ.

Join Our Chairman's Club



Join our Chairman's Club today and claim your 5,000 FREE points, DOUBLED to 10,000 for our first 1,000 members.

Our mission at Panache Cruises is to provide 'Nothing is too much trouble' personal service for you, our valued customer and to provide industry leading opportunities to ensure you get the most out of booking a luxury cruise with Panache Cruises.

Our latest initiative is the launch of our Chairman's Club, aimed to be the UK's most rewarding loyalty programme for luxury cruisers.

Most cruise lines offer loyalty programmes so we thought it was time for Panache Cruises to introduce a loyalty programme too, to ensure that you get something a little extra special when you book with us.

Our Chairman's Club offers the following benefits when you become a founder member, absolutely FREE:

- Points for every booking you make – you'll get a minimum of 1 point for every £1 you spend, and each point you earn will give you money off a future cruise
- Silver, Gold, Platinum and Diamond tiers give you additional rewards – as you ascend up the Chairman's Club tiers, you'll get additional rewards every time you move up a tier, and you earn more points too, giving you even more money off future cruises
- Early access to exclusive offers and deals – as a Chairman's Club member you'll get offers and deals unavailable anywhere else, as well as first option on new and exciting cruises
- Priority invites to virtual and in-person events – whenever we run an event, you'll be first in line for an invite
- Exclusive access to our Chairman's Club Facebook group – access to the Facebook group will give you a chance to mingle with likeminded cruises, discover new destinations, network with friends and enhance your cruising experience

Go to PanacheCruises.com/the-chairmans-club to fill in a short application form and join our Chairman's Club today.

I look forward to you joining our Chairman's Club, and helping you to enjoy some fantastic, unforgettable cruise experiences in the near future.

Speak soon.

James

P.S. Don't delay as it's only our first 1,000 members that get DOUBLE points when joining.



Join Our Chairman's Club



Welcome to our Chairman's Club

Chairman's Club is Panache Cruises' latest addition, bringing you, our valued customer an enhanced offering and additional tokens of our appreciation for your business.

At Panache Cruises we put you at the centre of everything we do, without customers we would not exist as a business and that's why we offer our 'nothing is too much trouble' customer service to ever customer that contacts us. It's our mission to find and provide your perfect cruise holiday.

We take care of absolutely everything relating to your cruise holiday, from the moment you leave your front door, to the time you return home, we will take care of every detail, its all part of our comprehensive service provided by our award winning Cruise Connoisseurs.

Our Chairman's Club aims to reward customer loyalty, the more cruises you book, the more we reward you to say thanks.

Points with Panache

We award a minimum of 1 point for every £1 you spend with Panaches Cruises, which can then be redeemed against future cruises.

We will even start your account off with 5,000 points, DOUBLED to 10,000 for the first 1,000 members to sign up.

What's a point worth?

For every 1,000 points you accumulate in your account they will be converted into a £10 saving on your next cruise holiday.

However, our Chairman's Club gets more rewarding the further up the tiers you go.....

Bronze

- Upto 24,999 points earned and you will be a Bronze member.
- Earn 100 points for every £100 you spend.
- Receive a Panache Cruises bone china mug for your first booking in the Bronze tier

Silver

- From 25,000 points earned
- Earn 125 points for every £100 you spend.
- Receive a Panache Cruises leather journal and pen for your first booking in the Silver tier

Gold

- From 50,000 points earned
- Earn 150 points for every £100 you spend.
- Receive a Panache Cruises back pack and umbrella for your first booking in the Gold tier

Platinum

- From 100,000 points earned
- Earn 175 points for every £100 you spend.
- Receive a significant token of our appreciation, personalised to you.

Diamond

- From 250,000 points earned
- Earn 200 points for every £100 you spend.
- Receive a significant token of our appreciation, personalised to you.

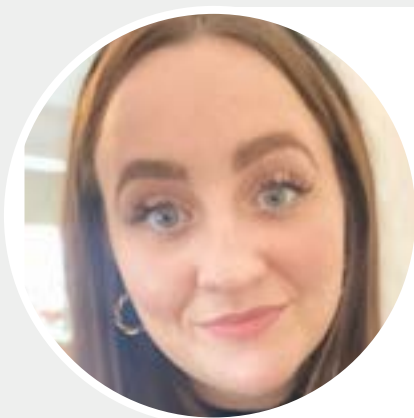
Meet Our Cruise Connoisseurs



Catherine Divan

Hi, my name is Catherine. I have worked in the travel sector now for just over 20 years, specialising in both luxury land-based holidays and luxury cruise.

While working for the UK's largest tour operator I gained significant expertise in selling worldwide travel experiences, specifically in luxury tailor-made travel. This provided me with opportunities to visit destinations where I have previously sold holidays to. I then went on to specialise in luxury cruise, where I have built up over 13 years of experience. This has enabled to me combine both my love of land-based holidays and cruising; the perfect combination!



Natalie Eadon

Hi I'm Natalie, I have worked in the cruise industry for the past 4 years. I have always worked in customer service, with my background in hospitality – customer service is my focus and it is really important for me to go above and beyond for my clients. During my time in travel, I have worked in all areas of the cruise business with experience both within the sales team and behind the scenes.

My passion is providing the best service possible and I love finding the perfect holidays for my customers. I love cruising (the saying is true, you really cannot travel any other way once you have been!) and I have been lucky enough to travel to some of the most amazing destinations all over the world.

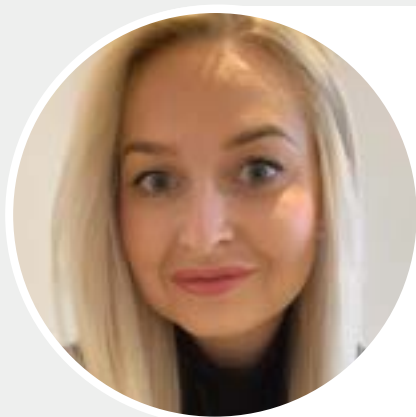


Kat Gelder

Hi I'm Kat and 2021 will be my 8th year working in the cruise industry! Within that time I've been lucky enough to travel to 4 continents and sailed on over 7 cruises, and been on board many more ships. I live in a lovely village called Stubbington, and my house is a stone's throw from the beach – the best part is that it looks over the Isle of Wight Solent, so I see all of the cruise ships departing Southampton on a daily basis!

I am passionate about customer service and getting out what you put in. I want my customers to be treated in the same way that I would wish to be – nothing is too much to ask!

Meet Our Cruise Connoisseurs



Katy Porter

Hello, I'm Katy. I have worked in cruise travel for almost 9 years now! I truly know that my heart lies in this industry; I have so much passion for cruising and it has given me so many amazing experiences. I have been so lucky to go on 6 different cruises from Royal Caribbean's Anthem of The Seas to the ultra-luxury Regent Seven Seas Mariner and Uniworld's River Princess, all of which are truly remarkable.

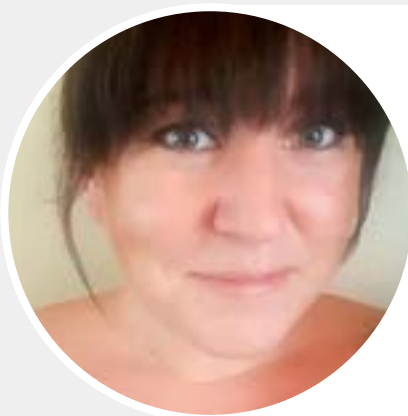
In 2014 I won CLIA'S Young Travel Agent of the Year Award which is one of my greatest achievements. Throughout my career I have been able to attend various cruise events, travel the world, and meet my customers personally. I have also made some fantastic friends for life.



Michelle Reyner

Hi, I'm Michelle. I have worked in travel for around 20 years and specifically in the luxury cruise market for the last few years. I always thought that luxury beach holidays got me the most excited about travel: a 5-star hotel, nice beach, and cocktail in hand, but then I discovered the wonderful world of cruising.

I have only ever dealt with the elite end of the market and can truly say I love the principles of the brands we work with. All are unique in their own way and all are superior to the masses. The standards of service, aesthetics, food and drinks would give any world-class hotel a run for its money.



Emma Taylor

I have been working in the cruise industry for the past 20 years and have focused on luxury cruise in particular for 12 years. I started off my travel career as an apprentice at Thomas Cook and immediately fell in love with the industry. A few years later I met James Cole and have worked with him ever since. My passion is sales, and I love nothing more than creating experiences which are really unique.

Throughout my years in the industry, I have been able to travel to some amazing destinations and experience some fabulous itineraries and ships, including river cruises, expedition, yacht and ocean – so I have it all covered!



PANACHE
CRUISES

PanacheCruises.com